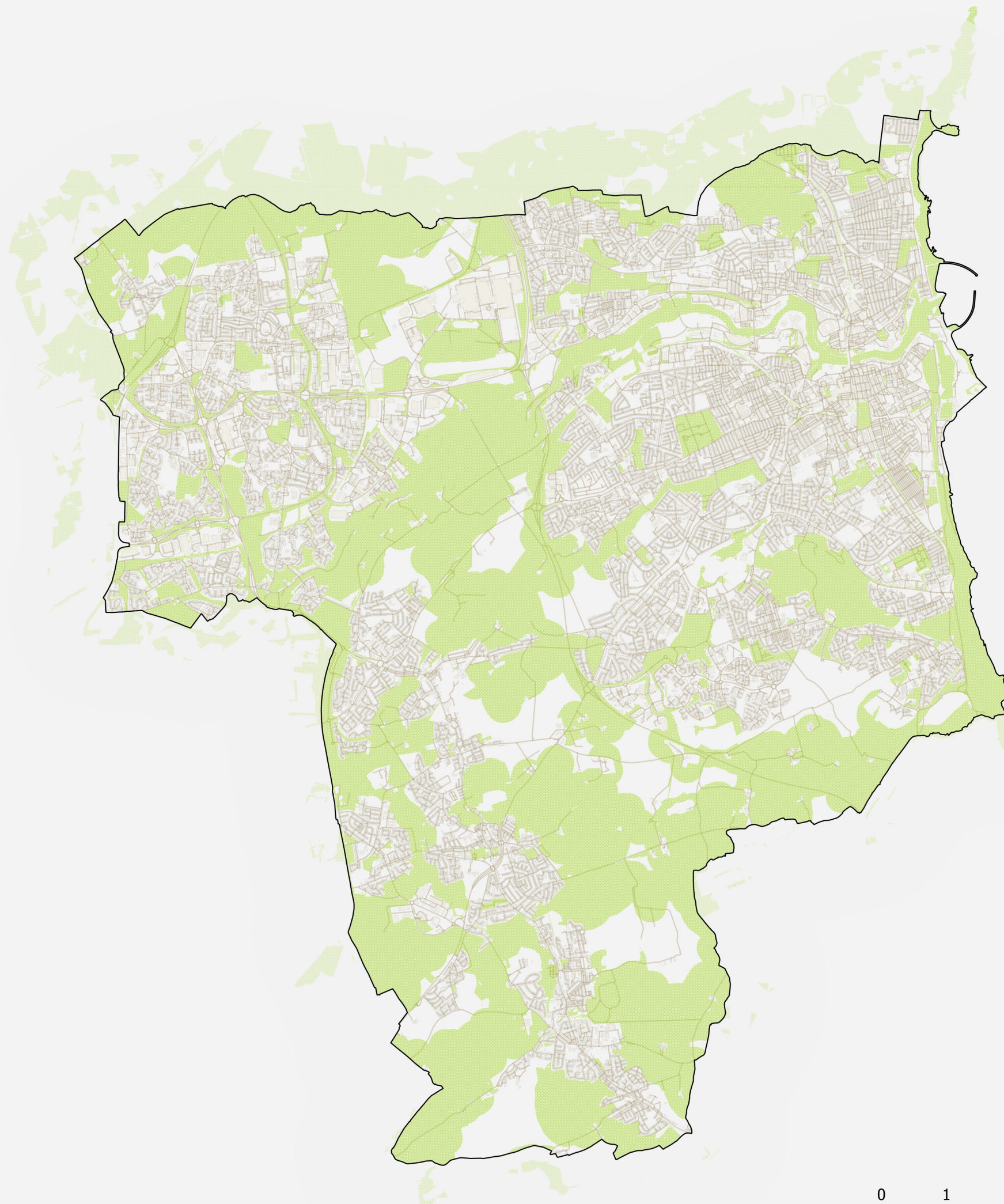




AD.22(B)

Key

Sunderland Wildlife Corridors Network



0 1 2 3 4 5 km

BURTON REID
ASSOCIATES

ANNEX B (Sunderland)

Figure 6.4.1: Sunderland Wildlife Corridors Network (Core Sites, Secondary Sites, Stepping Stones, Buffers)

Date: 11.12.20

BY:LS

DOCUMENT REF:
BR0465/LDP/A

REV:A



Key



Sunderland Core Sites



Sunderland Watercourses
(Core Sites)



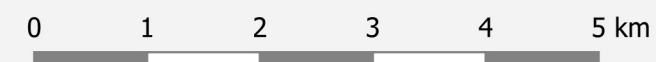
Sunderland Buffer Zones

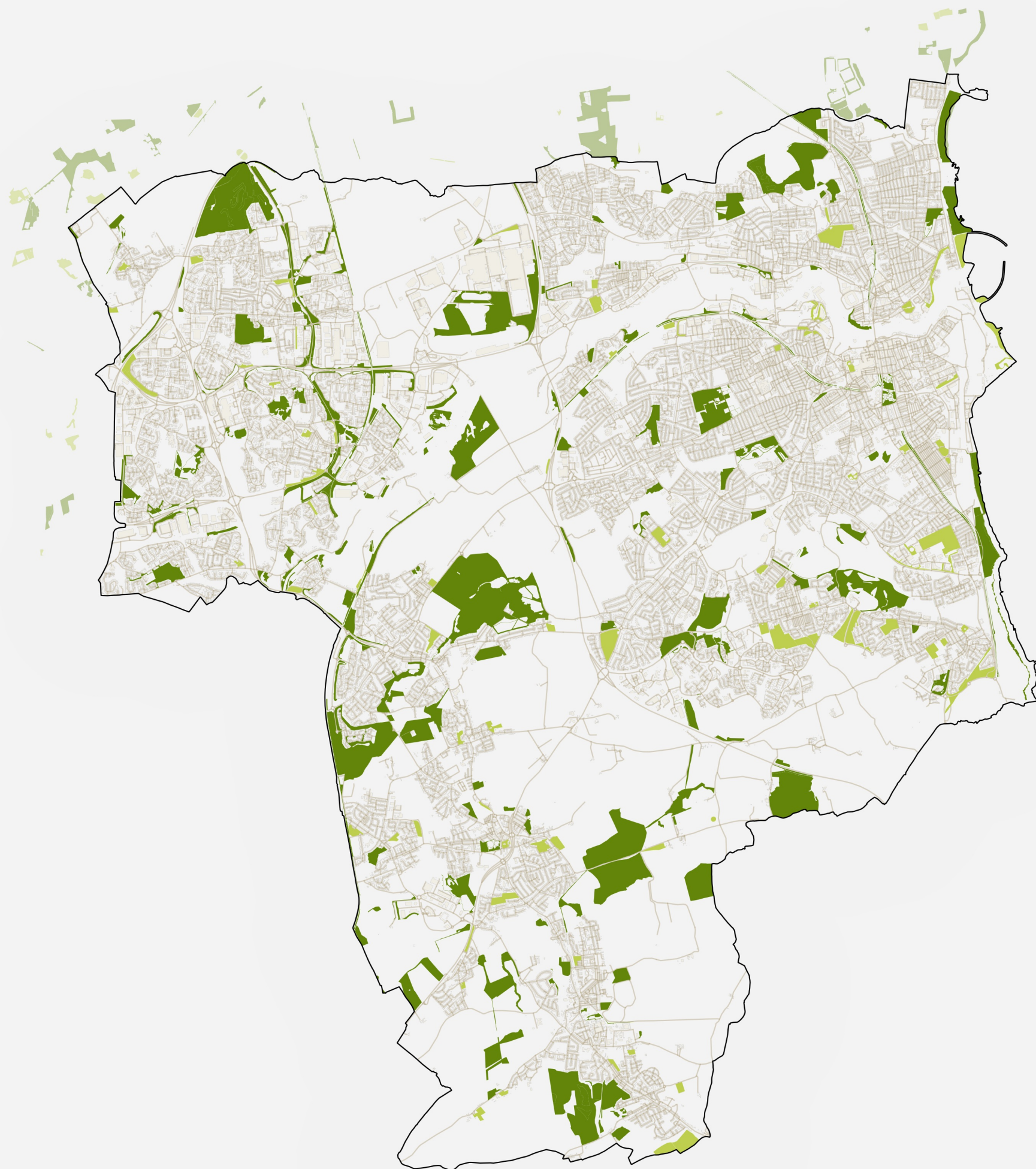
BURTON REID
ASSOCIATES

ANNEX B (Sunderland)

Figure 6.4.2: Sunderland Wildlife
Corridors Network (Core Sites and
Buffer Zones)

Date: 11.12.20





Key

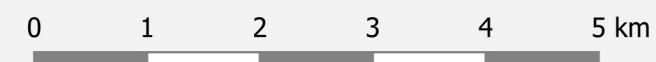
-  Sunderland Secondary Features
-  Sunderland Stepping Stones

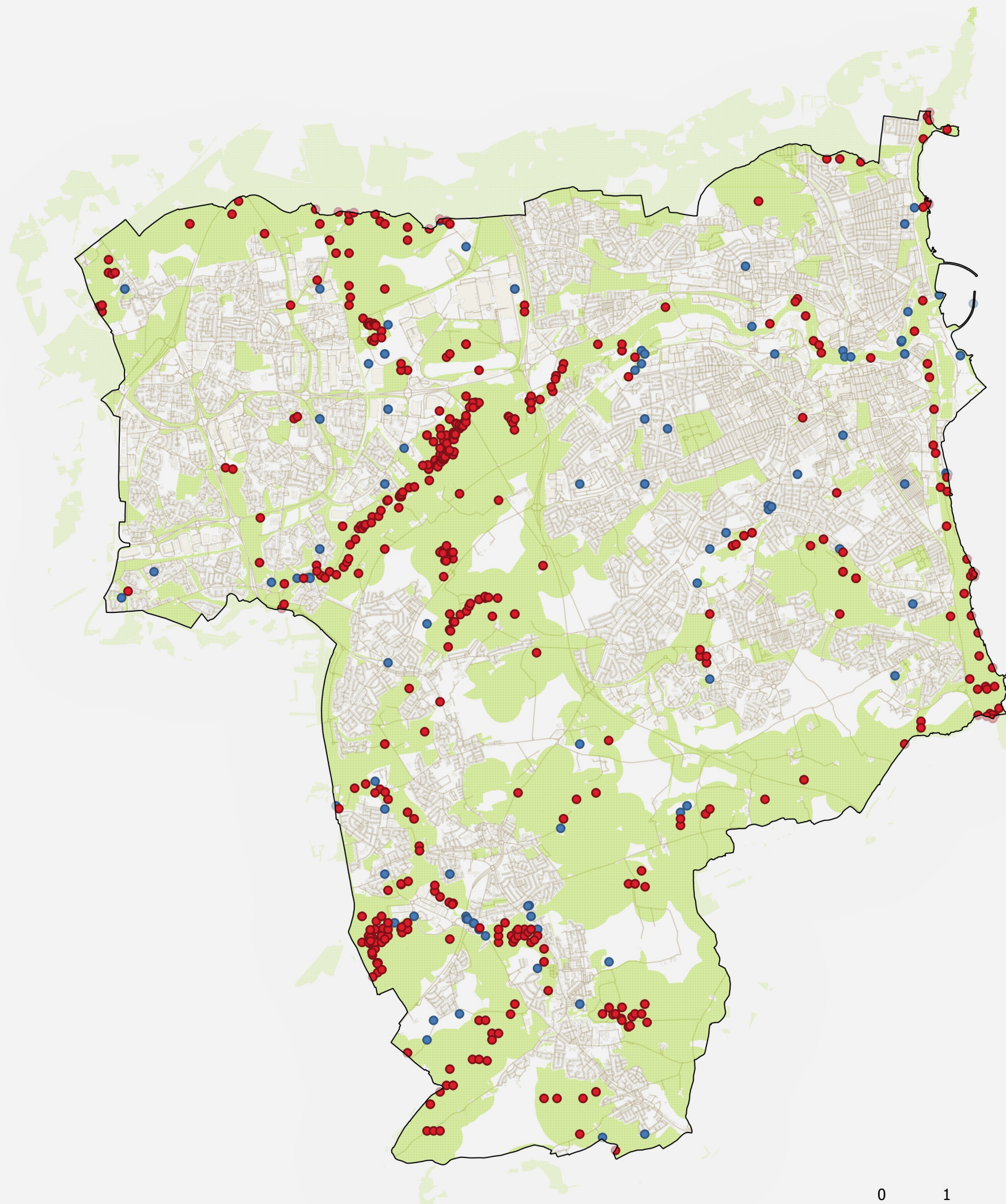
BURTON REID
ASSOCIATES

ANNEX B (Sunderland)

Figure 6.4.3: Sunderland Wildlife
Corridors Network (Secondary
Features and Stepping Stones)

Date: 11.12.20





0 1 2 3 4 5 km

Key

Sunderland Key Species within network

Sunderland Key Species outside network

Records for Key Species were provided by the Environmental Records Information Centre for the North East of England (ERIC). Of those records 89% approx. fall within the mapped Wildlife Corridor Network.

Please note that this excludes bat records due to bats being highly mobile species that are frequently found to be associated with built development.

BURTON REID
ASSOCIATES

ANNEX B (Sunderland)

Figure 6.4.4: Sunderland Wildlife Corridors Network (Key Species)

Date: 11.12.20