

Apprenticeships Infrastructure and Transport



- We have had 5 apprentices from our last intake
- 3 apprentices have secured employment with Sunderland City Council so far, before the end of their apprenticeship!
 - All apprentices are on track to pass their Level 3 in Civil Engineering at New College Durham in Spring 2026
- All apprentices have experienced numerous departments within the service area to ensure that they can make informed decisions when applying for permanent employment.

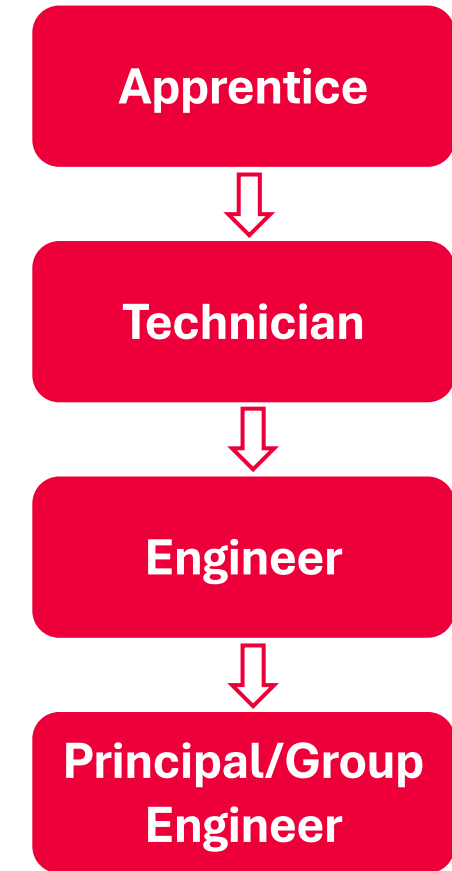


Career Progression:

Within our service area, there is a clear progressional route that can be taken by prospective apprentices in a career at Sunderland City Council.

During Apprenticeship training, individuals will complete a Level 3 course in Civil Engineering, which is then developed further by the completion of a HNC in Civil Engineering, or a relevant subject.

Training is provided by New College Durham.



Apprentices are enrolled on a Level 3 Advanced Apprenticeship in Civil Engineering.

covering a range of topics, including:

- Construction Principles
- Construction Design
- Construction Technology
- Health and Safety in Construction
- Site Engineering for Construction
- Further Mathematics for Construction
- Construction in Civil Engineering.

And the following optional units (subject to change):

- Surveying in Construction
- Management of a Construction Project
- Principles and Applications of Structural Mechanics



- Training is delivered at the college in Durham on a day release basis and apprentices must make their own way to New College Durham.
- Apprentices will work four days with their team within Sunderland City Council and one day at New College Durham during term-time.
- All apprentices will be fully supported through their apprenticeship with college tutors, SCC mentor, line manager and college mentors.



For more information on the Level 3 Apprenticeship, you can visit the New College Durham website: [Level 3 Advanced Apprenticeship Civil Engineering Technician](#)



Apprenticeship entry requirements are 5 GCSEs at 9-4/A*-C, with requirement to have Maths and English qualifications at a minimum of a Grade 4/C or equivalent.



For more information on Apprenticeships at Sunderland City Council, please visit our dedicated page on our website:
[Apprenticeships - Sunderland City Council](#)



Highway Projects

Highway Projects plan, design, and deliver improvements to the city's highway network that keep people, goods, and services moving safely and efficiently. The team manages and delivers road upgrades, junction improvements, sustainable travel schemes and public-realm enhancements.



Sunderland Station Public Realm



Sunderland Strategic Transport Corridor –
Phase 3



Active Travel – Bungalow Cafe



Example: £2.7m Active Travel Project (A183 Dame Dorothy Street)



Before



During



After

Feasibility:

- The Feasibility team manage and oversee all incoming requests for service for the highways function. The team investigate each query thoroughly and explain the technical engineering decisions to residents to improve the residents lived experience.



Network, Traffic and Road Safety:

Within this team there are many functions that deliver measures on the highway network, such as:

- Traffic Projects Team
- Road Safety Team
- Network Operations



Traffic Projects:

The Traffic Projects team deliver many schemes to improve highways such as:

- Minor Schemes such as dropped kerbs, installation of bollards etc
- Traffic calming schemes
- 20mph installation
- Traffic Regulation Order installation such as waiting restrictions etc



Road Safety:

SCC deliver a variety of road safety campaigns to local primary schools to promote road safety and the utilisation of alternative modes of transport.

SCC currently offer the following programmes:

- Child Pedestrian Training
- Safety Works interactive sessions
- Inconsiderate Parking programme
- Walk to School Week
- WOW Living Street
- Promote Brake Walk
- Promote Brake Road Safety Week
- Campaigns using Road Safety GB North East resources and messages



Network Management:

Network Management is responsible for ensuring the safe, efficient and reliable movement of all traffic including pedestrians and cyclists across the city's highway network. This includes keeping the network in a safe and serviceable condition, supporting Traffic Regulation Orders, managing signs and notices, carrying out basic site investigations, and helping to maintain good traffic flow and road safety



Highway Maintenance

The apprentice in the Highway Asset team will be involved in a broad range of projects including the assessment and design of highway maintenance schemes, public rights of way and cycleway inspections and maintenance, assessment of the condition of highway assets and highway inspections.



Bridges and Structures:

The Bridges Team is responsible for inspecting and maintaining all bridges and highway structures, which includes footbridges, retaining walls and subways within the City.

We conduct detailed inspections, design and contract supervision of bridge strengthening and structural maintenance schemes, giving priority to public safety, the primary route network and other strategic routes.



Maintenance

Example of a recent Bridge Maintenance project on Chartershaugh Bridge in Washington. The works involved removal of surfacing, deck preparation, concrete repairs, waterproofing & resurfacing. The photos below show these activities being carried out.



Inspection



We conduct detailed inspections of bridges and highway structures including footbridges, retaining walls and subways to enable a programme of maintenance to be carried out ensuring that they are fit for purpose and safe for use.



Flooding and Coastal:



The Flooding and Coastal team are responsible for Drainage, Flooding Issues and Coastal Protection.

Lead Local Flood Authority (LLFA)

Main point of contact for Flooding Issues,
Management of flooding and drainage throughout the Authority

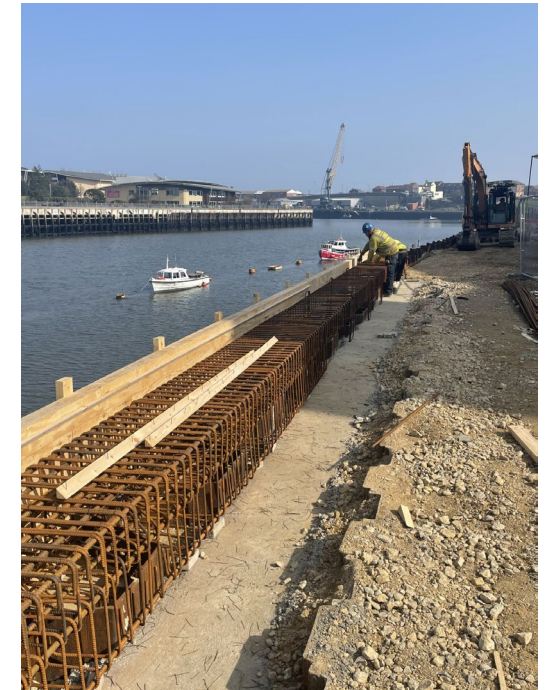
Coastal Protection Authority (CPA)

Management Responsibility for Sea Defences



Flooding and Coastal:

Drainage, SuDS and River Protection Works



Coastal Works:

